



Smart-UPS Lithium-ion short-depth UPS 230V

APC certainty with Total Cost
of Ownership in mind



apc.com/lithium-ion

Not for consumer use.

Life Is  On

APC[™]
by Schneider Electric

The world's most popular network and server UPS now with Lithium-ion batteries

APC™ award-winning Smart-UPS™ is the most popular UPS in the world for servers, storage and network power protection. Smart-UPS provides availability and manageability to your network allowing you to focus on business growth instead of business downtime. Trusted to protect critical data and equipment from power problems by supplying clean and reliable network-grade power.

Smart-UPS's patented green mode provides high efficiency at low, medium and high load levels. This makes them ideal for multi-core or virtualized servers that have varying load consumption all while saving utility costs. Managed outlet groups allow segmented load control to power on or off your equipment in series, as well as load shedding to preserve battery power for critical connected equipment or reboot a hung device without impacting other equipment. Lithium-ion batteries provides 3X in battery life, better performance at higher temperatures and Total Cost of Ownership savings compared to valve-regulated lead-acid (VRLA) batteries. The short-depth UPS form factor allows for compatibility with wall mount racks.



Save up to 50% on Total Cost of Ownership when using Smart-UPS Lithium-ion short-depth UPS solutions

APC Smart-UPS with Lithium-ion technology enables IT professionals to lower Total Cost of Ownership (TCO) by minimizing UPS maintenance and offering remote UPS management across distributed environments.

Why should you consider Smart-UPS Lithium-ion short-depth?



3X Longer life expectancy than VRLA batteries



Eliminate the cost of battery replacement, labor and maintenance



Save on TCO by up to 50%



Up to 65% lighter batteries for easier handling and installation



Remote UPS management options



Five-year factory warranty on the UPS and battery



Battery management system and certifications provide higher level of performance



Greater efficiency in charge and discharge of the batteries

Smart-UPS Lithium-ion features

Intelligent and efficient network power protection. Ideal for servers, point-of-sale, routers, switches, hubs and other network devices.



High-efficiency green mode

Achieves up to 96% efficiency which minimizes utility and cooling costs without compromising UPS performance or reliability.

Network-grade power

Provides stable power conditions by filtering noise, automatic voltage regulation (AVR) and surge protection.

LCD display

Intuitive interface provides detailed information with ability to configure locally.

Built-in energy meter

Measures energy use and displays UPS efficiency in operating modes for easy tracking.

Intelligent battery management system

Monitoring at the cell level to manage voltage helps Lithium-ion batteries provide a higher level of performance.

Operate without battery

Immediately protect equipment when power returns after a complete discharge of the battery.

Five-year warranty

Peace of mind with a five-year warranty on both electronics and internal batteries.

Smart-UPS features

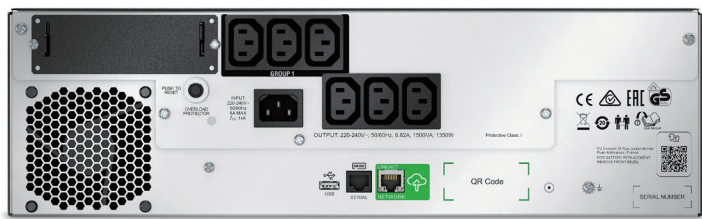
SMTL750RMI2UC



SMTL1000RMI2UC



SMTL1500RMI3UC



Switched outlet group

Control a group of output load receptacles independent from the main UPS:

- Cycling the entire UPS
- Sequenced turn ON/OFF
- Shedding of noncritical loads based on parameters (battery time, runtime remaining and overload)
- Scheduled time OFF to conserve energy
- Rebooting hung device without cycling the entire UPS

Lithium-ion batteries

Operates at higher temperatures without degradation of the performance of the battery. Up to one-third lighter and 3x longer life than VRLA batteries.

Flash upgradeable firmware

Allows for field updates of firmware via communication ports or Network Management Card (NMC).

Communication ports

Options of Serial, USB, Ethernet and SmartSlot™ for network accessory cards.

Communication protocols

Choose from Modbus Serial, USB PowerSummary, HTTP, SNMP and Telnet.

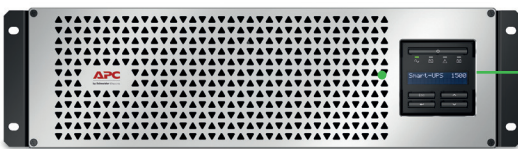
Input circuit breaker

Re-settable protection.



APC Smart-UPS display

Intuitive, easy-to-use LCD interface



LCD display screen

Clear, consistent and detailed information in your choice of basic or advanced menus.

Power status

- Operating mode and efficiency mode
- Load VA/watts/amps
- Input/output voltage and frequency
- Battery capacity and runtime
- Energy meter

Configuration

- Language
- Power quality settings
- Alarm, delay and threshold settings

Test and diagnostics

Initiate battery and runtime calibration tests.

Control

UPS and outlet group settings.

Logs

See explanation of last 10 transfers and errors.

LED indicators

Quickly identify online, on battery, error and replace battery status.

Intuitive interface

Easy-to-use buttons to navigate and adjust settings.

Load energy meter

Track energy usage in kilowatt hours.

Smart-UPS SC Lithium-ion features

Power protection for entry-level servers, voice and data networks

SCL500RMI1UC



SCL500RMI1UC



*SCL500RMI1UNC



Communication ports

Easy connection and initialization by Serial ports.

Use USB with Serial to USB adapter.

*APC SmartConnect port for easy-to-use remote monitoring feature that provides automatic notifications, firmware updates and advanced support services. Ideal for small business monitoring.

Site wiring error

Error wiring detection.

Rugged sheet metal

Construction rigidly holds and protects critical electrical components.

Audible alarms

Provides notification of changing utility power and UPS power conditions.

Input circuit breaker

Re-settable protection.

Two-stage network grade power conditioning

Circuitry filters power aberrations.

*Embedded network management card

Allows users to remote monitor and control the UPS via secure network browsers or external command line interfaces. Ideal for fleet management.

Lithium-ion batteries

Provides long-life battery power, ability to operate at higher temperatures without degradation of battery performance. Up to one-third lighter than VRLA batteries.

APC SmartConnect feature available on the "C" suffix model

*Embedded Network Management Card option available on the "NC" suffix model

Smart-UPS management solutions



PowerChute Business Edition

For graceful UPS shutdown

Built-in manageability for your UPS unit

PowerChute Business Edition software provides UPS management, system shutdown and innovative energy reporting capabilities. Energy usage, cost and CO2 reporting provides a greater understanding of the energy consumed by IT equipment enabling improved energy efficiency. Advanced analysis features help to identify the causes of potential power-related problems before they occur; ensuring the health of your protected equipment.

PowerChute Business Edition features:

- Graceful system shutdown
- Outlet aware shutdown
- Scheduled shutdowns
- Error notifications
- Secure SNMP v1 & v3 support
- SNMP for Windows & Linux
- Centralized management via SNMP
- Energy usage reporting
- Energy costing
- CO2 emissions monitoring
- Data and event logging



UPS network management card 3

For remote management and control

Connect to your network and enjoy direct control

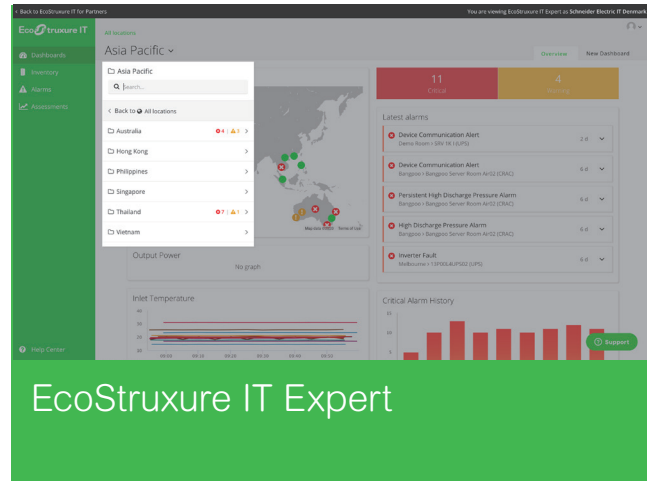
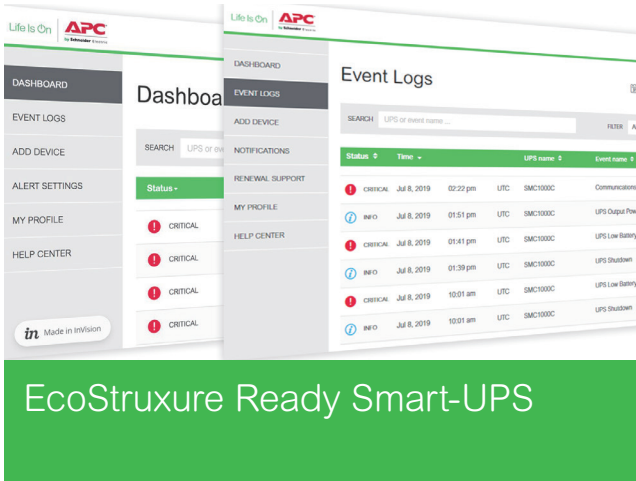
APC UPS network management cards allow for secure connection and control of an individual APC UPS unit via web browser, command-line interface or SNMP. The configurable notification features keep you informed of problems as they occur. For protected servers, the included PowerChute network shutdown software provides graceful, unattended shutdown in the event of an extended power outage, keeping business information.

Network management card features:

- View the user interface with a browser for quick access from anywhere on a secure network.
- Enable remote device management of your UPS by connecting it directly to the network.
- Get real-time error event notifications to quickly respond to critical situations, reducing repair time and maximizing uptime.
- Eliminate the need to dispatch technicians to remote locations by rebooting equipment remotely.

EcoStruxure Ready Smart-UPS

Secure monitoring and UPS fleet management.



Smart-UPS Web Portal for remote monitoring

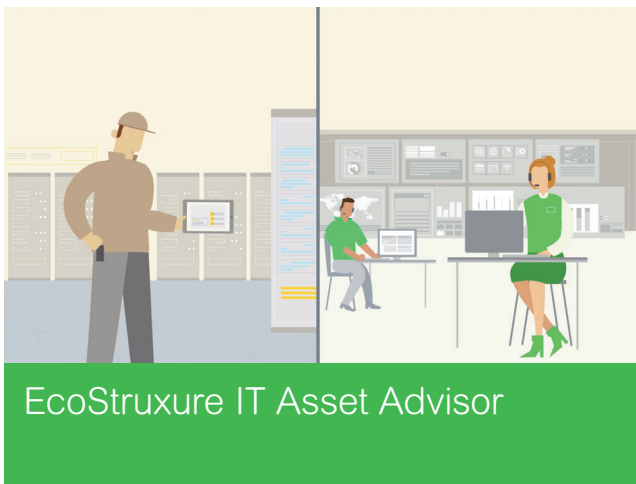
Provides visibility directly to the customer to help make proactive decisions and maximize uptime via the SmartConnect Ethernet Port.

Ideal for small and medium businesses who prefer to self-manage.

The do-it-yourself advanced monitoring

We empower you to monitor and service customers on your own or provide EcoStruxure IT Expert to your customers who prefer a self-managed option.

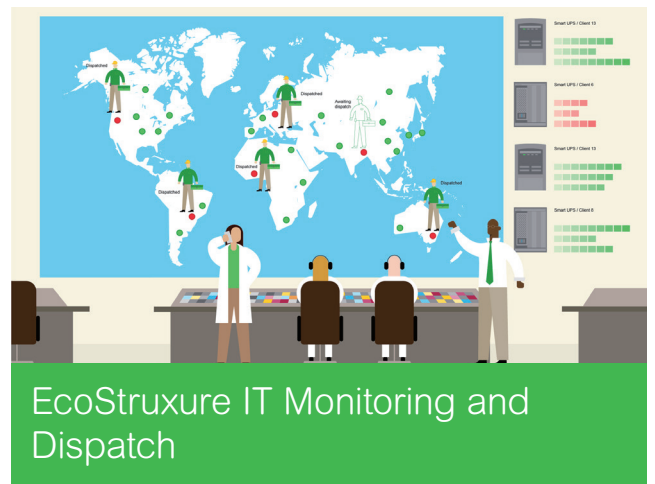
Ideal for distributed IT sites and businesses with mixed IT environments.



We advise, you maintain

We provide monitoring services, and you handle the maintenance. This option appeals most to partners who want to use their own on-site service.

Learn more at: schneider-electric.com/ecostruxure



We monitor and service

We provide monitoring and maintenance services on your behalf. Ideal for IT solution providers who want to add service without additional cost to your business model.

Smart-UPS accessories



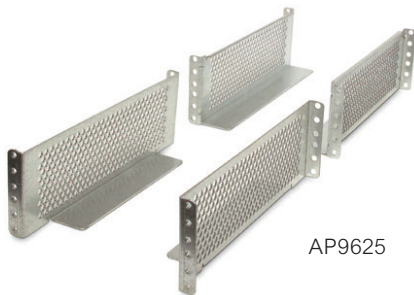
AP9641



AP9834

UPS management accessories

- AP9640: UPS Network Management Card
- AP9641: UPS Network Management Card with environmental monitoring
- AP9643: UPS Network Management Card with environmental monitoring and Modbus
- AP9834: APC USB Wi-Fi Device for wireless communication [compatible with AP9641 & AP9643 pre-installed or embedded]



AP9625

Rail Kit options

- AP9625: APC Smart-UPS two-post rail kit

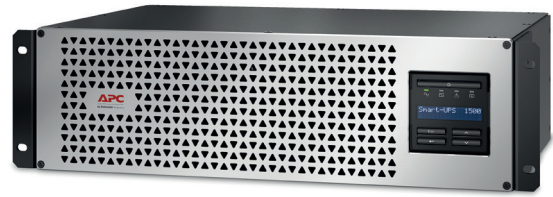


SBP1500RMI

Service bypass panels

- SBP1500RMI: APC service bypass PDU, 230V; 10amp with (6) IEC C13
- SBP3000RMI: APC service bypass PDU, 230V; 16amp with (6) IEC C13 and (1) C19
- SBP3000RMHW: APC service bypass 100-240V; 16amp; Hardwire Input/Output

Product family



SKU technical specifications

	SCL500RM11UC, *SCL500RM11UNC	SMTL750RM12UC	SMTL1000RM12UC	SMTL1500RM13UC
Topology	Line Interactive			
Output				
Output power capacity	400 Watts / 500 VA	600 Watts / 750 VA	800 Watts / 1000 VA	1350 Watts / 1500 VA
Nominal output voltage	230V			
Output voltage distortion	+/- 2% full (linear) load			
Output frequency (sync to mains)	50/60Hz +/-3Hz (auto sensing)			
Waveform type	Sine Wave			
Output connections	(4) IEC-320 C13			(6) IEC-320 C13
Switched outlet group	Yes/2			Yes/1
Efficiency at full load	97%			>96%
Input				
Nominal input voltage	230V			
Input frequency	50Hz/60Hz +/-3Hz (auto sensing)			
Input connections	IEC 320 C14			
Input voltage range for main operations	207-253Vac			160V - 286V
Batteries and runtime				
Battery type	Lithium-ion			
Runtime (Half Load/ Full Load)	6.3 min/ 2.7 min	14.7 min/ 6 min	19 min / 8 min	14 min/ 5.1 min
Communications and management				
Interface port(s)	USB Type A, APC SmartConnect (RJ45)	Serial (RJ45), SmartSlot, USB Type A, APC SmartConnect (RJ45)		
Available SmartSlot™ interface quantity	0, *embedded Network Management Card in "NC" suffix model	1		
Control panel	LED display	Multi-function LCD status and control console		
Audible alarms	Yes			
Physical				
Net HxWxD	44.44 x 431.8 x 232.14mm	86 x 438 x 318mm	86 x 438 x 318mm	130 x 438 x 302mm
Rack height	1U	2U	2U	3U
Net weight	4.1kg, *4.2kg	15.4kg	16.3kg	19.5kg
Shipping weight	6.5kg, *6.5kg	17.69kg	18.56kg	22.5kg
Shipping HxWxD	168 x 590 x 337mm	229 x 584 x 472mm	229 x 584 x 472mm	278 x 585 x 448mm
Color	Black [Silver front bezel]			
Environmental				
Operating environment	10-40°C	0-40°C		
Operating relative humidity	10-90%	0-95%, non-condensing		
Operating elevation	0-2000m	0-3000 meters		
Storage temperature	-15-45°C	-15-45°C (short term storage)		
Storage relative humidity	10-95%	0-95%, non-condensing		
Storage elevation	0-15000 meters			
Audible noise at 1 meter from surface of unit	45.0dBA			
Conformance				
Regulatory approvals	IEC 62040-1, IEC62040-2, IEC60950-1, CE, RCM, EAC, GS			
Standard warranty	5-Year UPS and batteries			

Life Is n



apc.com/lithium-ion

Schneider Electric

One Boston Place
Floor 27
Boston, MA 02108
United States
www.apc.com

© 2019 Schneider Electric. All Rights Reserved. Schneider Electric, APC, Smart-UPS and Life Is On Schneider Electric is a trademark and the property of Schneider Electric SE, its subsidiaries and affiliated companies.

• 998-20655542_GMA-A4